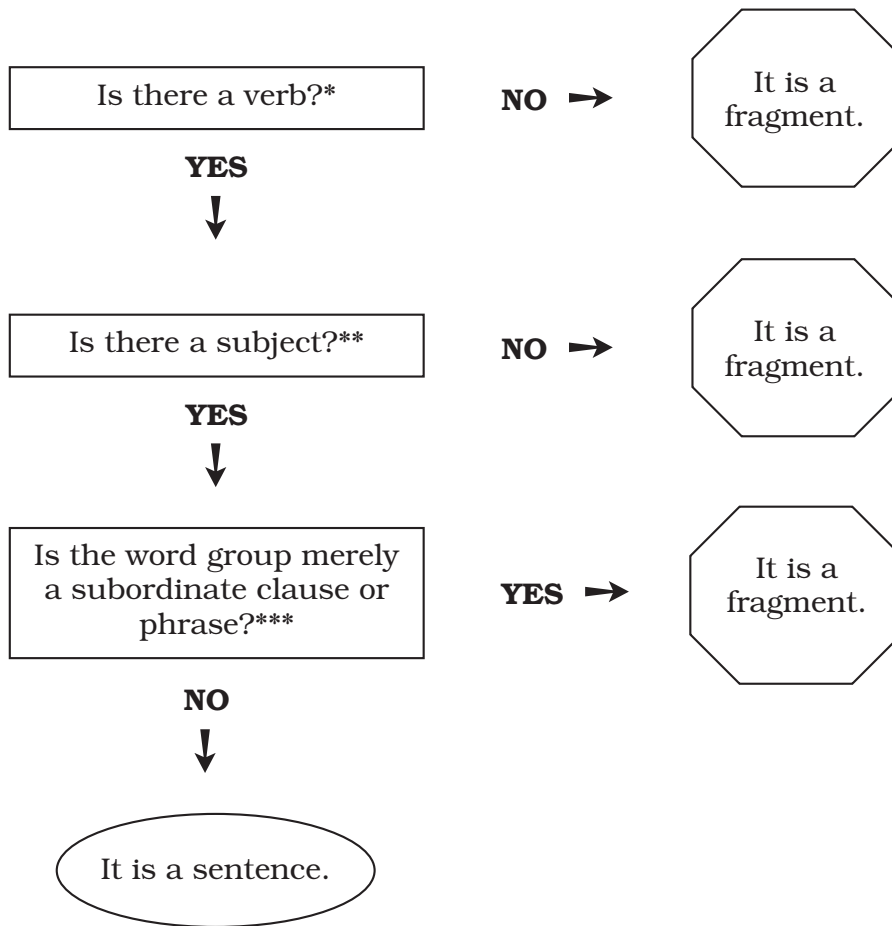


Test for sentence completeness



* Do not mistake verbals for verbs.

** The subject of a sentence may be *you*, understood.

*** A sentence may open with a subordinate clause, but the sentence must also include an independent clause.

If you find any fragments, try one of these methods of revision:

1. Attach the fragment to a nearby sentence.
2. Turn the fragment into a sentence.